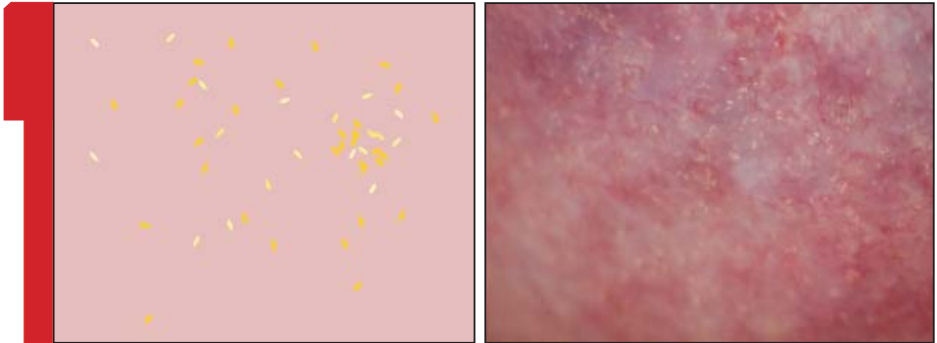


SCHEMATIC OF LESIONS WITH REAL-LIFE EXAMPLE

GRAINY SANDY PATCH



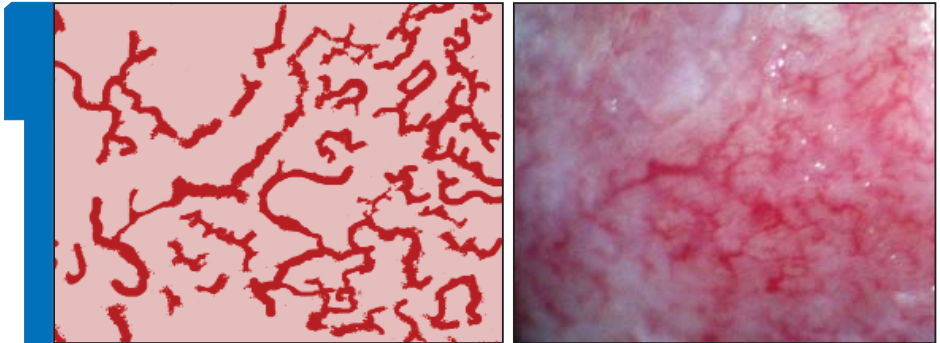
SCHEMATIC OF LESIONS WITH REAL-LIFE EXAMPLE

HOMOGENEOUS YELLOW SANDY PATCH



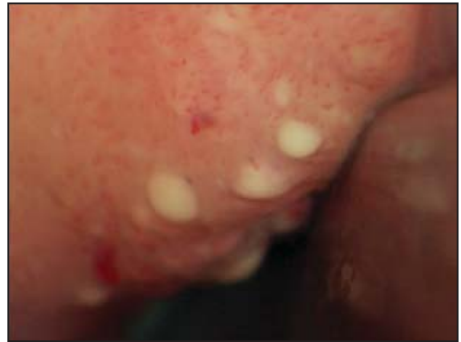
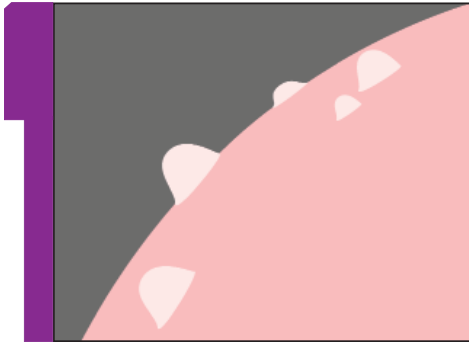
SCHEMATIC OF LESIONS WITH REAL-LIFE EXAMPLE

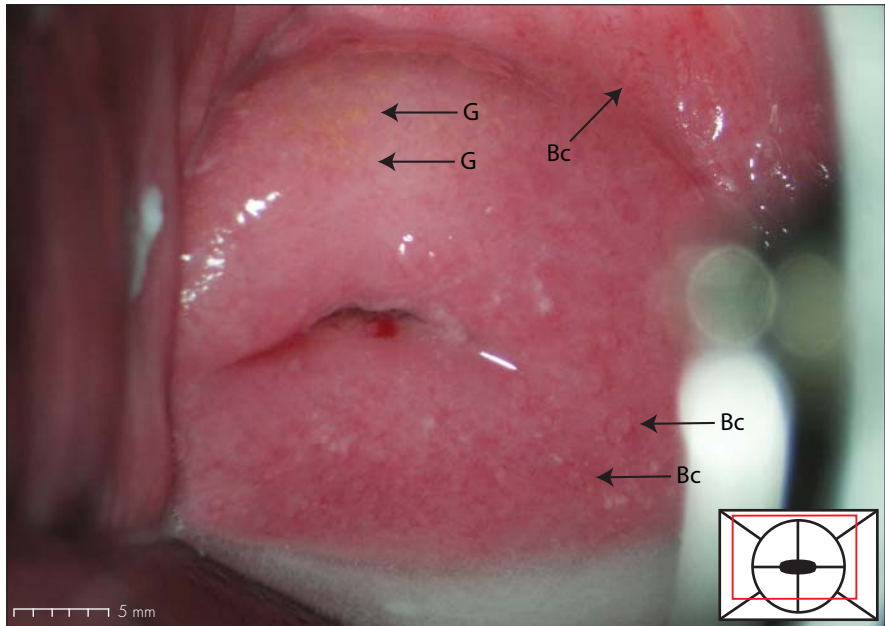
ABNORMAL BLOOD VESSELS



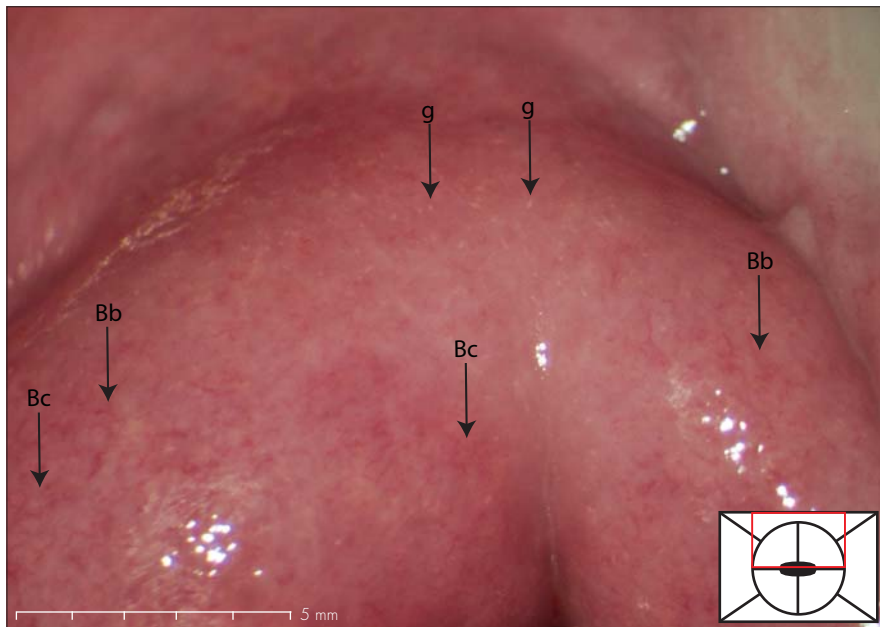
SCHEMATIC OF LESIONS WITH REAL-LIFE EXAMPLE

RUBBERY PAPULES

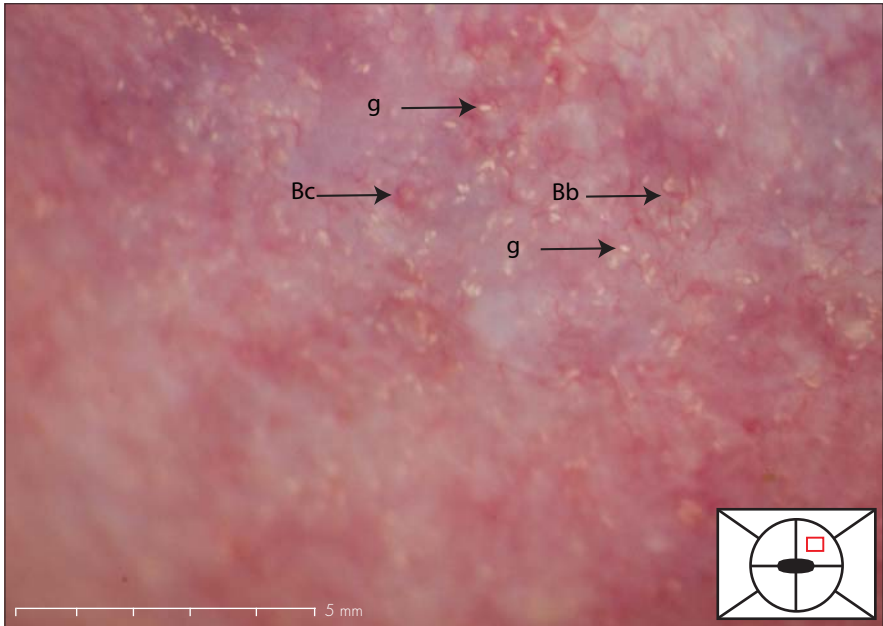




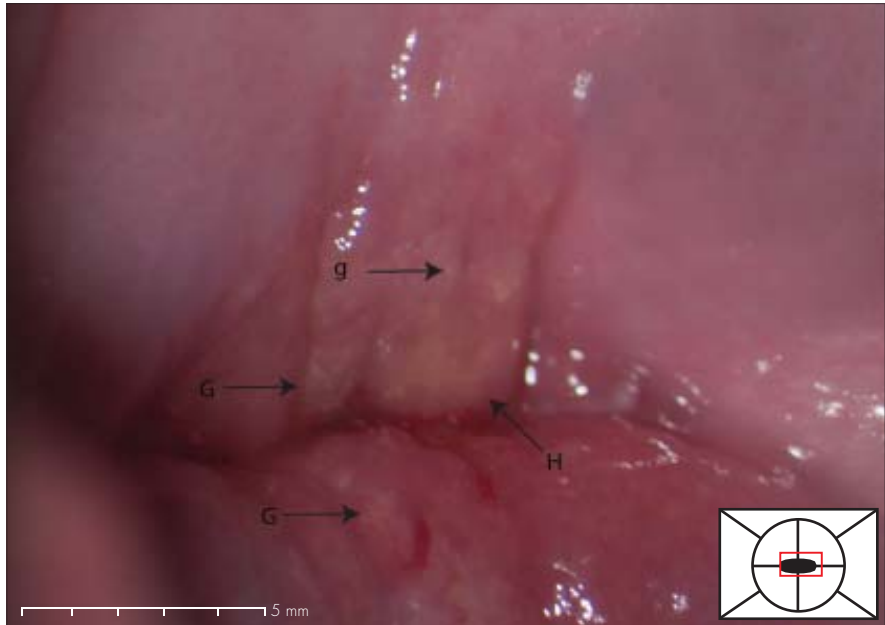
Grainy sandy patches (G). Widespread abnormal blood vessels: circular (Bc).
The discharge shown is candidiasis.



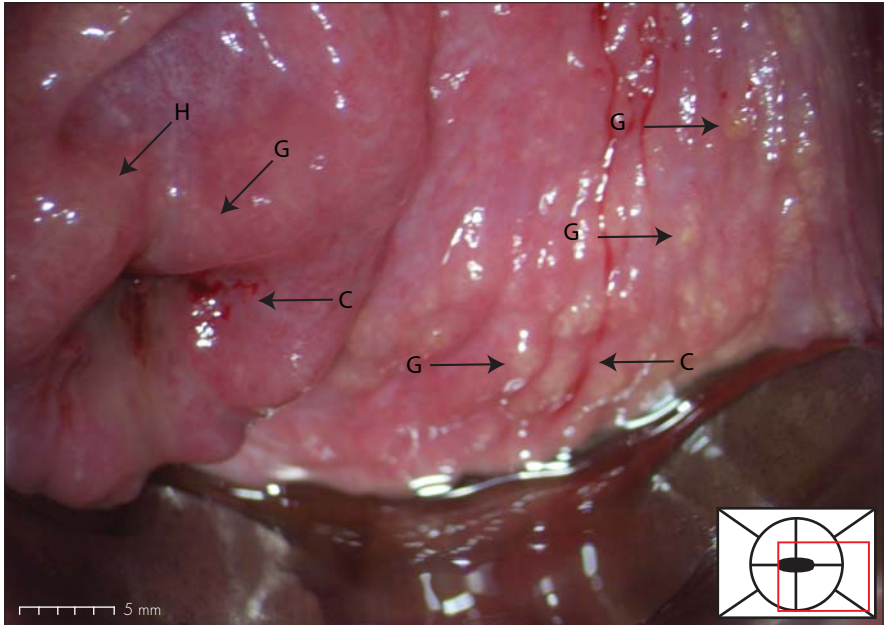
Sandy patch appearing as single grains (g). Widespread abnormal blood vessels: circular (Bc) and branched (Bb).



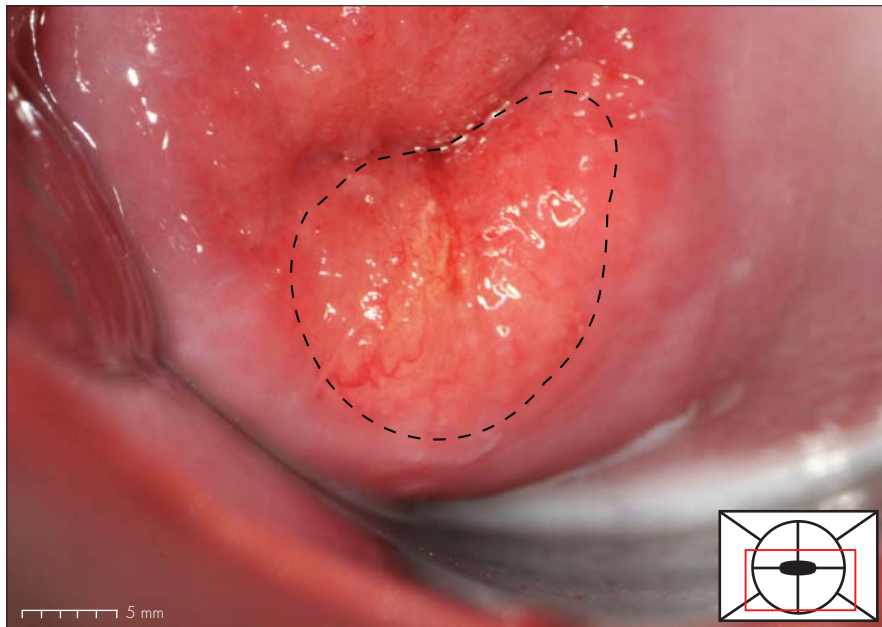
Widespread single grains (g) and abnormal blood vessels: branched (Bb) and circular (Bc).



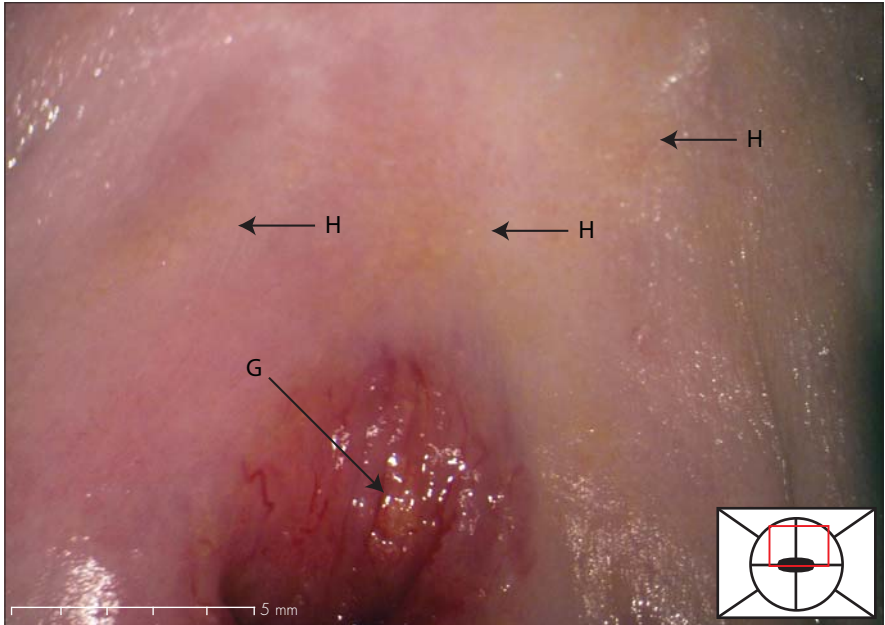
Grainy sandy patches (G) with single grains (g) and homogenous yellow sandy patch (H).



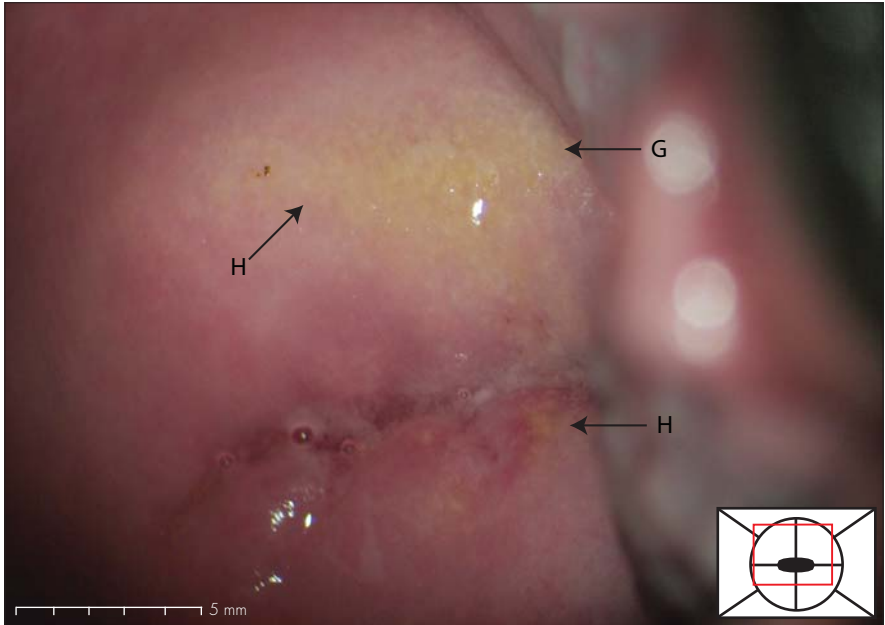
Widespread grainy sandy patches (G) on vaginal wall and cervix. Homogenous yellow sandy patches (H). Contact bleeding.



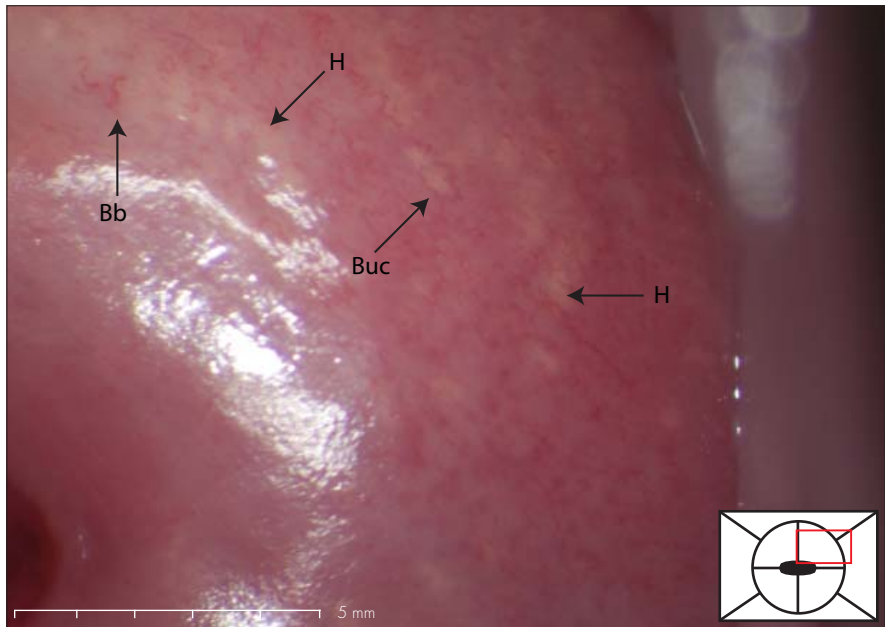
Homogenous yellow sandy patch (dashed line).



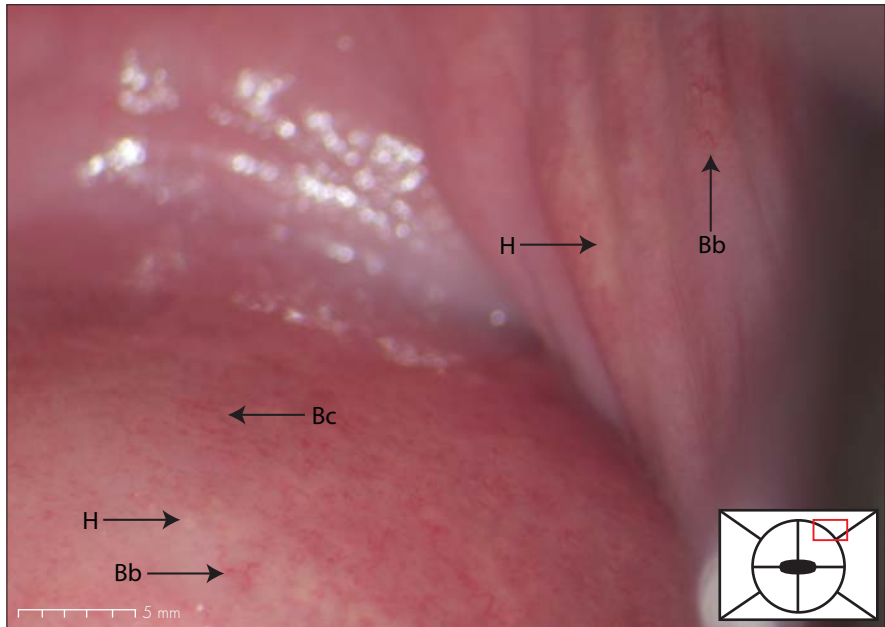
Homogenous yellow sandy patches (H). Grainy sandy patches (G).



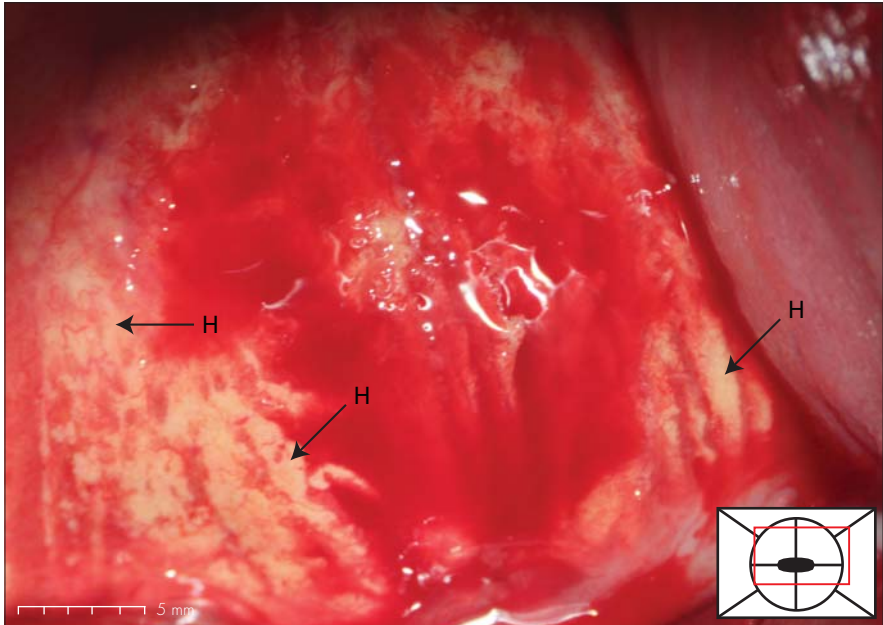
Homogenous yellow sandy patches (H). Grainy sandy patches (G).



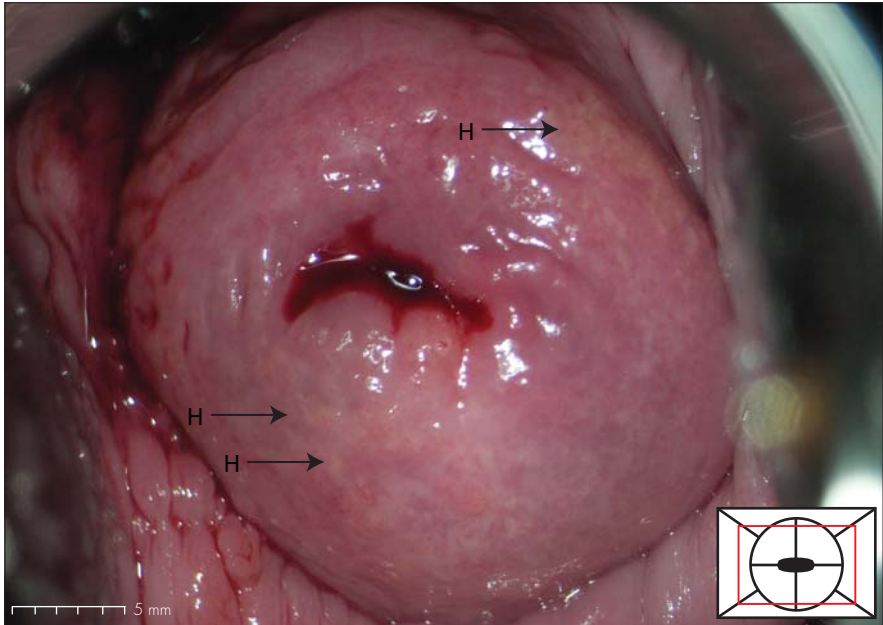
Homogenous yellow sandy patches (H). Widespread abnormal blood vessels: unevenly calibrated (Buc) and branched (Bb).



Homogenous yellow sandy patches (H). Widespread abnormal blood vessels: branched (Bb) and circular (Bc).



Severe case of homogenous yellow sandy patches (H) and severe contact bleeding.



Homogenous yellow sandy patches (H). Widespread abnormal blood vessels. Menstrual blood in the os.